

EXCEPT AS OTHERWISE PROVIDED BY CONTRACT, THIS DRAWING AND SPECIFICATIONS SHALL NOT BE REPRODUCED, COPIED OR USED AS THE BASIS FOR MANUFACTURE OR SALE OF MATTER DEPICTED HEREIN WITHOUT THE EXPRESSED WRITTEN PERMISSION OF THE CLAUDE LAVAL CORPORATION, OR ITS ASSIGNEES.

REVISION HISTORY				
ZONE	REV	DESCRIPTION	DATE	APPROVED

THIS DRAWING HAS BEEN GENERATED AND IS MAINTAINED BY A CAD SYSTEM. CHANGES SHALL ONLY BE INCORPORATED AS DIRECTED BY AN APPROVED ENGINEERING CHANGE ORDER (ECO). PAPER COPIES ARE UNCONTROLLED.

## SUBMITTAL DRAWING

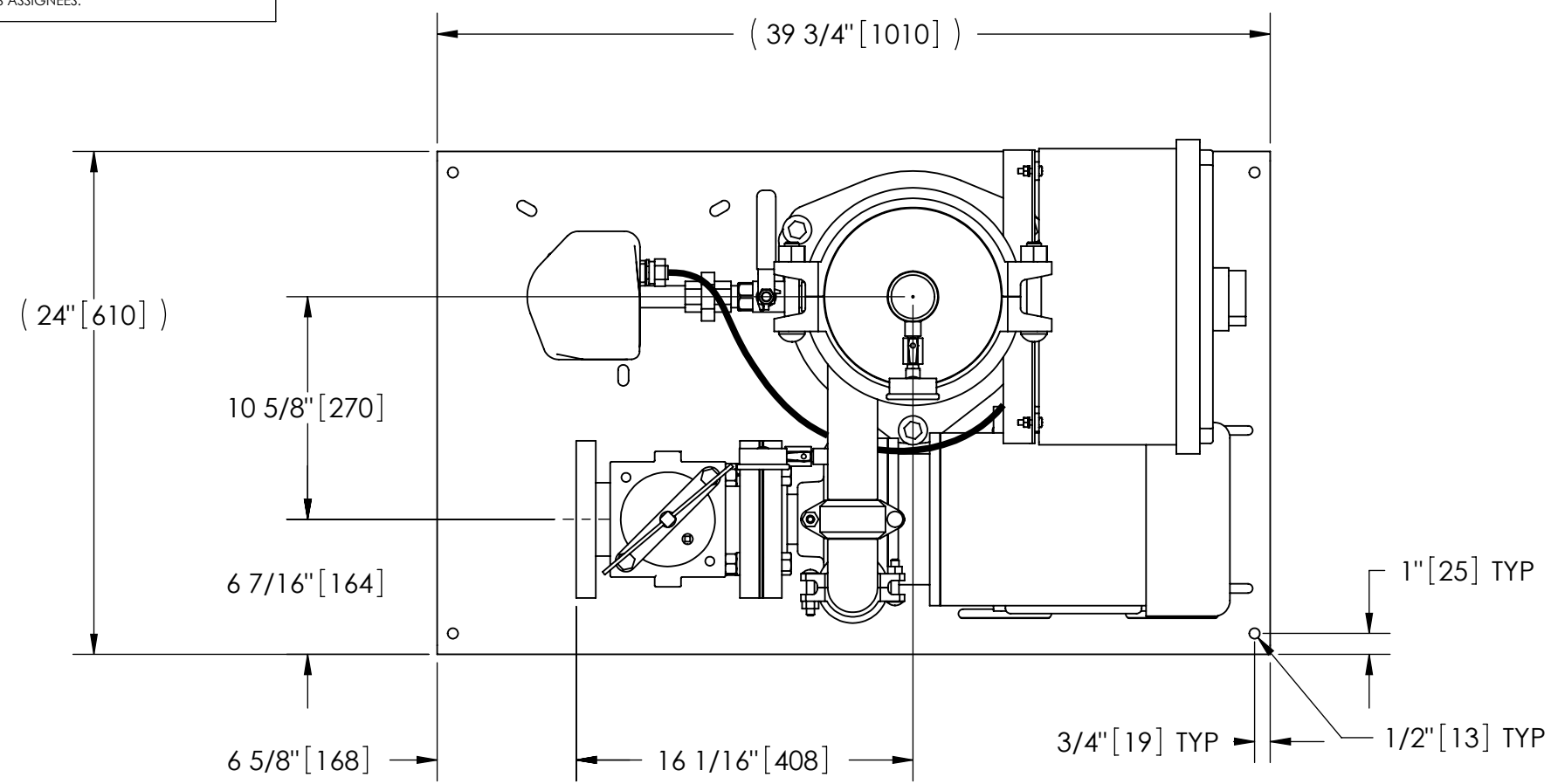
This drawing is submitted for spatial consideration only. Do not pre-plumb to these dimensions.

### NOTES:

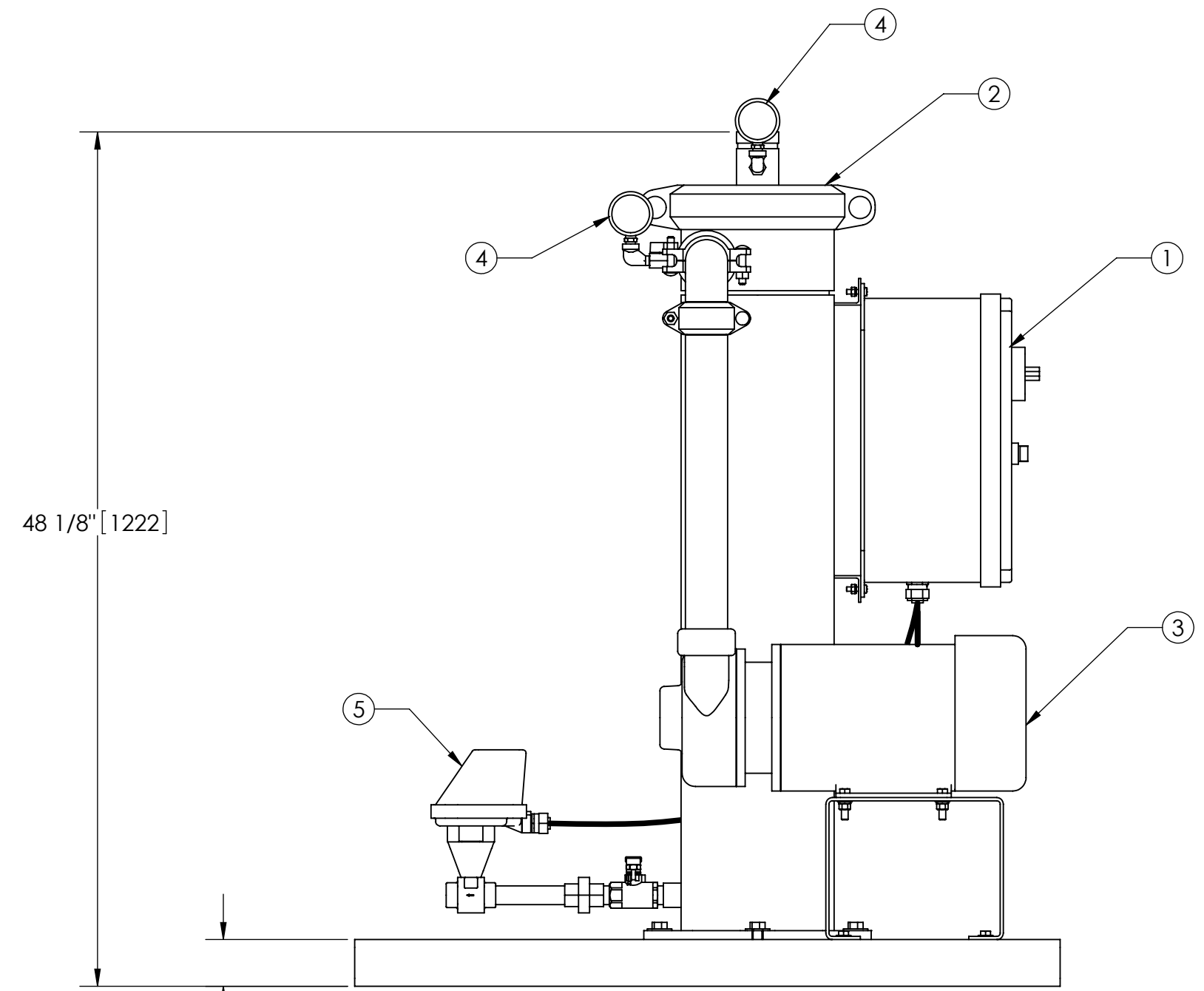
- INLET IS 3" PIPE (125# ANSI FLANGED).
- OUTLET IS 2" PIPE (GROOVED).
- PURGE OUTLET IS 3/4" PIPE.
- MAXIMUM PRESSURE: 150 psi (10.3 bar).
- MAXIMUM TEMPERATURE: 100°F (37.8°C).
- SPECIFIED FLOWRATE OF 100 gpm (23 m<sup>3</sup>/hr).
- FINISH: AS ASSEMBLED.
- POWER REQUIREMENT: 460V, 3PH, 60Hz.
- NEMA 4X MOTOR STARTER ENCLOSURE WITH SAFETY DISCONNECT AND H.O.A. SWITCH.
- APPROXIMATE DRY WEIGHT: 491 lbs (223 kg).
- INLET/OUTLET VALVE KIT, MODEL TCX-0100 RECOMMENDED.
- MINIMUM PIPE FROM TOWER BASIN TO TC SYSTEM IS 3" PIPE.
- FLOODED SUCTION REQUIRED.

### COMPONENT LIST:

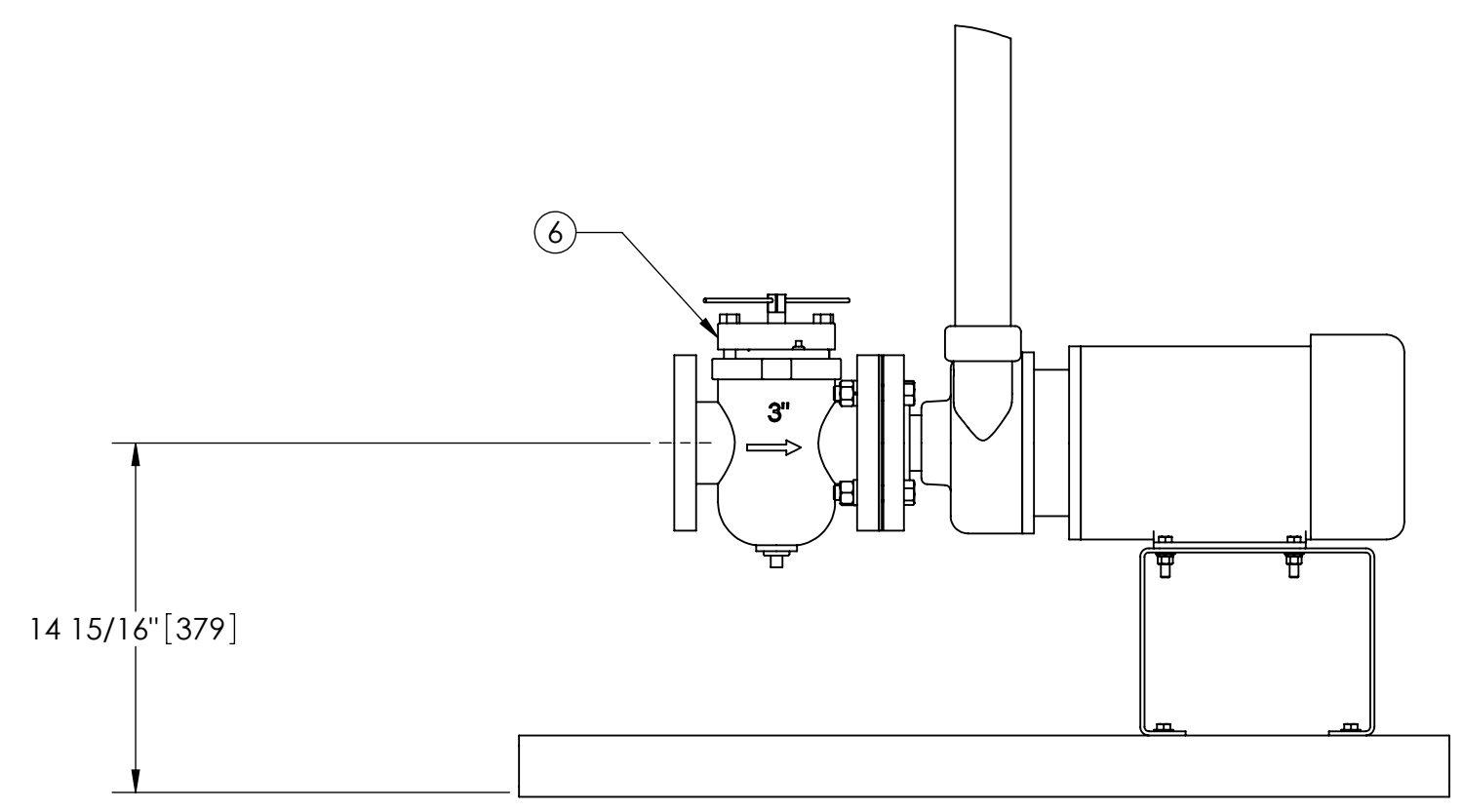
- ELECTRICAL CONTROL BOX 460V 60Hz W/120V TRANSFORMER.
- SEPARATOR: HTX-0060-TC.
- PUMP: 5 HP CENTRIFUGAL, 3500 rpm, 460V, 60Hz.
- INLET/OUTLET PRESSURE GAUGES: 0-100 psi, GLYCERIN-FILLED.
- PURGE EQUIPMENT: CMBV-07-120V.
- BASKET STRAINER.



TOP VIEW



FRONT VIEW W/O STRAINER



FRONT VIEW PUMP & STRAINER

<small>UNLESS OTHERWISE SPECIFIED: DIMENSIONS ARE IN: INCHES (mm) TOLERANCES ARE:</small> <small>FRACTIONS    DECIMALS    ANGLES</small> <small>± 1/2"        .XX ± .01        ± 1/4°</small> <small>                  .XXX ± .005        .XXXX ± .0005</small>	ENGINEERED FOR:		<b>STANDARD</b> <small>APPROVALS</small> <small>DATE</small>		 <small>CLAUDE LAVAL CORP. FRESNO, CALIFORNIA 93727 WWW.LAKOS.COM</small>  <small>LAVAL UNDERGROUND SURVEYS</small>
	DO NOT SCALE DRAWING		<small>DRAWN</small>	<small>NAC/DLW</small> 01/03/05	
	MATERIAL		<small>ENGR</small>	<small>DLW</small> 5/25/05	
	FINISH		<small>MFG</small>	-	
AS ASSEMBLED		<small>WORK ORDER</small>	-	<small>QTY.</small>	<small>TITLE</small> <b>TCX-0100-CMBV, TC SYSTEM, SWEEPER HTX-0060, 460V 60HZ DELUXE</b>
SCALE		<b>C</b>	<small>MODEL NO.</small>	<small>DWG NO.</small>	<b>115444</b> <b>A</b>
SCALE		1:8	<small>EST. WT.</small>	<small>SHEET</small>	<b>491 lb</b> <b>1 OF 1</b>

DWG NO. 115444  
 SH 1  
 REV A