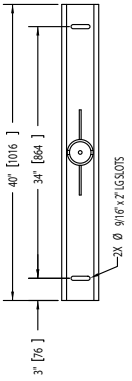
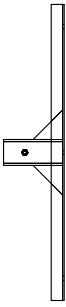


ZONE	REV	DESCRIPTION	DATE	APPROVED

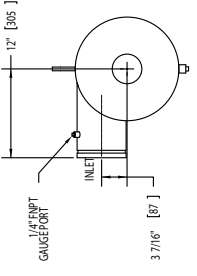


THE DRAWINGS HAVE BEEN GENERATED AUTOMATICALLY BY A CAD SYSTEM. CHANGES SHALL ONLY BE INCORPORATED AS DIRECTED BY AN APPROVED ENGINEERING CHANGE ORDER (ECO). PAPER COPIES ARE UNCONTROLLED.

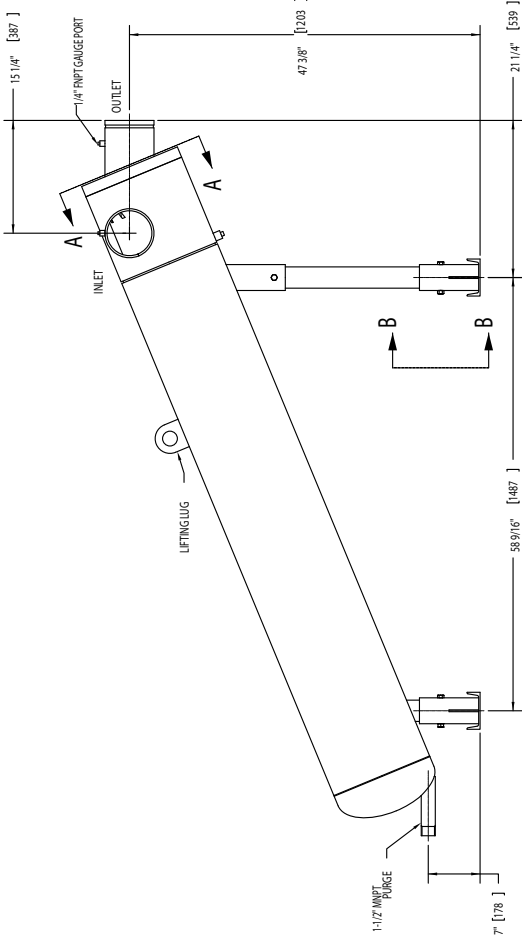
- NOTES:**
1. INLET & OUTLET ARE 6" GROOVED PIPE
 2. MAXIMUM PRESSURE: 150 psig [10.3 barg]
 3. MAXIMUM TEMPERATURE: 180°F [82.2°C]
 4. FINISH: 304 STAINLESS STEEL
 5. APPROXIMATE DRY WEIGHT: 660 lbs [314 kg]
 6. FINISH: LAKOS GREEN (EXTERIOR ONLY)



SECTION B-B



SECTION A-A



SUBMITTAL DRAWING

This drawing is submitted for spatial consideration only. Do not pre-plumb to these dimensions.

PROJECT NUMBER: 115201	STANDARD: DWG	DATE: 1/27/06	DRAWN BY: b	CHECKED BY: -	SCALE: 1:1.0	SHEET NO.: 115201	TOTAL SHEETS: 1 OF 1
PROJECT NAME: HH-0450 SEPARATOR, 450-825 gpm, CARBON STEEL	PROJECT NUMBER: 115201	PROJECT DATE: 1/27/06	PROJECT DRAWN BY: b	PROJECT CHECKED BY: -	PROJECT SCALE: 1:1.0	PROJECT SHEET NO.: 115201	PROJECT TOTAL SHEETS: 1 OF 1

DESIGN APPROVED: DATE: 1/27/06	PROJECT APPROVED: DATE: 1/27/06
DESIGNER: b	PROJECT MANAGER: -
CHECKER: -	PROJECT ENGINEER: -
PROJECT CLASSIFICATION: MD CARBON STEEL	PROJECT MATERIAL: LAKOS GREEN