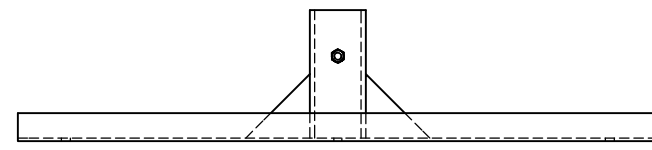
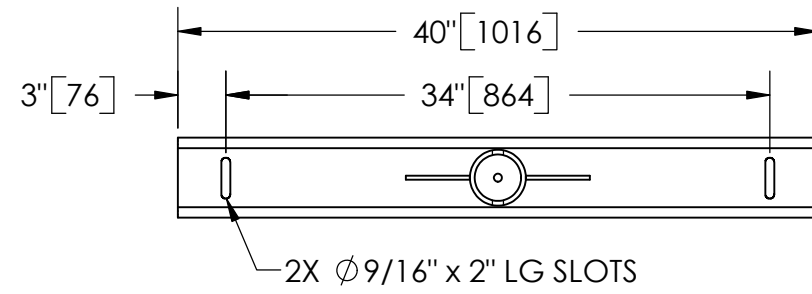


EXCEPT AS OTHERWISE PROVIDED BY CONTRACT, THIS DRAWING AND SPECIFICATIONS SHALL NOT BE REPRODUCED, COPIED OR USED AS THE BASIS FOR MANUFACTURE OR SALE OF MATTER DEPICTED HEREIN WITHOUT THE EXPRESSED WRITTEN PERMISSION OF THE CLAUDE LAVAL CORPORATION, OR ITS ASSIGNEES.

NOTES:

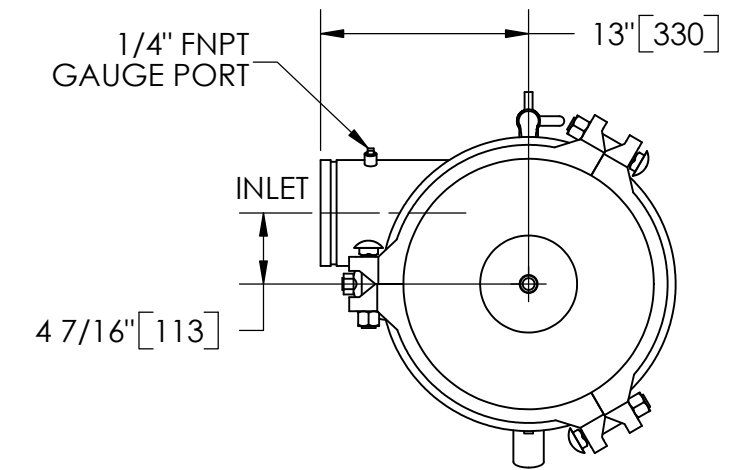
1. INLET & OUTLET ARE 6" GROOVED PIPE.
2. MAXIMUM PRESSURE: 150 psi (10.3 bar).
3. MAXIMUM TEMPERATURE: 180°F (82.2°C).
4. PRESSURE LOSS: 3-12 psid (.2-.8 bar) AT RATED FLOW.
5. RATED FLOW: 650-1200 gpm (150-275 m<sup>3</sup>/hr).
6. APPROXIMATE DRY WEIGHT: 966 lbs (439 kg).
7. FINISH: LAKOS BLUE (EXTERIOR ONLY).



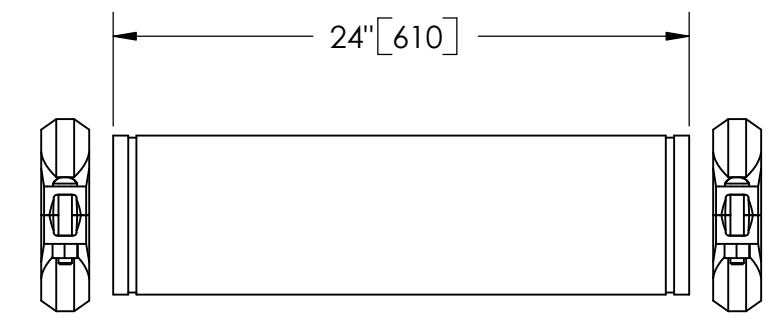
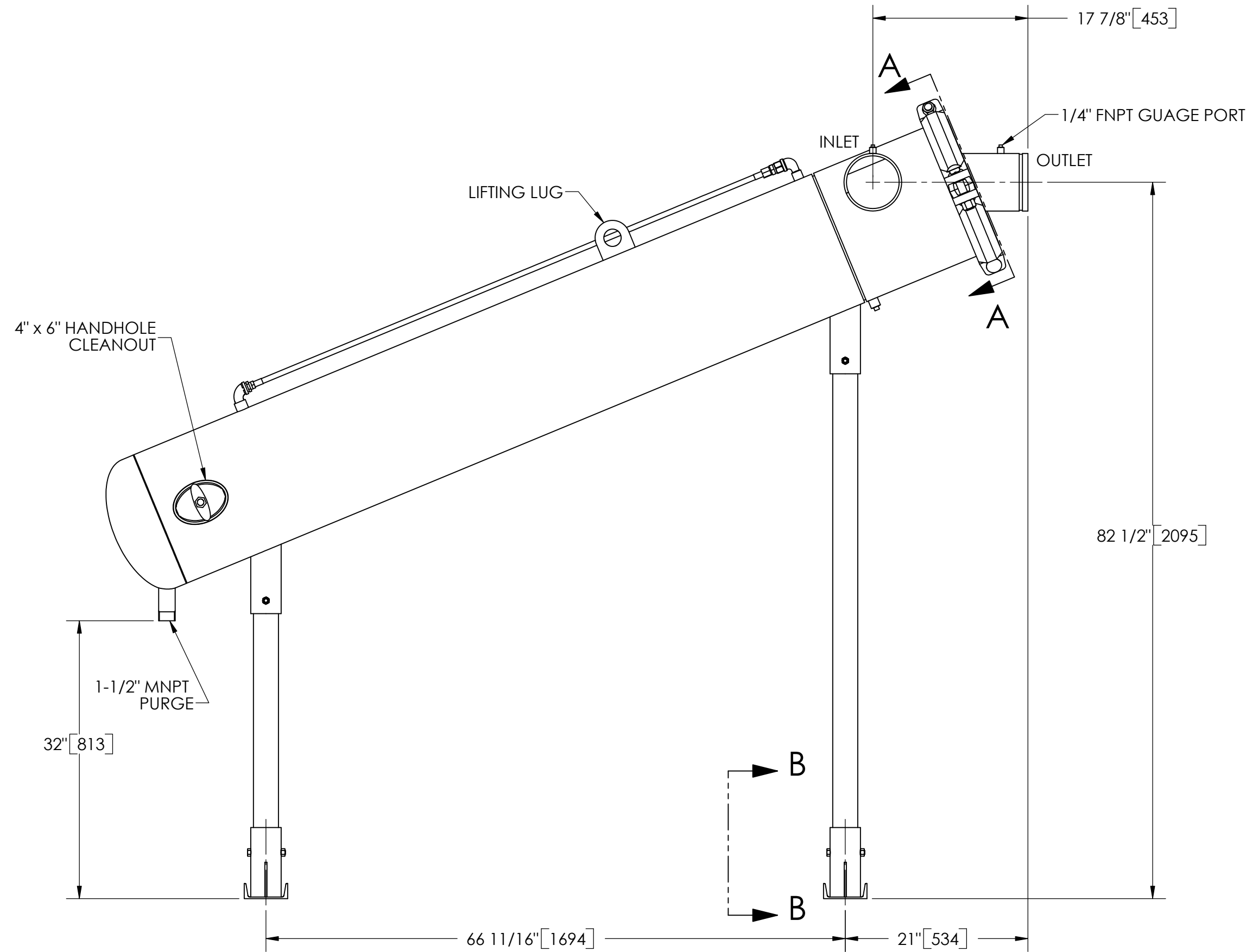
SECTION B-B

REVISION HISTORY				
ZONE	REV	DESCRIPTION	DATE	APPROVED

THIS DRAWING HAS BEEN GENERATED AND IS MAINTAINED BY A CAD SYSTEM. CHANGES SHALL ONLY BE INCORPORATED AS DIRECTED BY AN APPROVED ENGINEERING CHANGE ORDER (ECO). PAPER COPIES ARE UNCONTROLLED.



SECTION A-A



**GROOVED SPOOL**  
MODEL GCS-0450/0500/0650 (AVAILABLE SEPARATELY)  
REQUIRED FOR REMOVAL OF TOP ASSEMBLY

**SUBMITTAL DRAWING**

This drawing is submitted for spatial consideration only. Do not pre-plumb to these dimensions.

<small>UNLESS OTHERWISE SPECIFIED: DIMENSIONS ARE IN: INCHES [mm] TOLERANCES ARE: FRACTIONS DECIMALS ANGLES ± 1/4" .XX ± .01 ± 1/4° .XXX ± .005 .XXXX ± .0005</small>	ENGINEERED FOR: <b>STANDARD</b>			<small>CLAUDE LAVAL CORP. FRESNO, CALIFORNIA 93727 WWW.LAKOS.COM</small>					
	APPROVALS	DATE		TITLE					
	DRAWN DLW	1/16/06		JPX-0650-L, SEPARATOR, 650-1200 gpm, CARBON STEEL					
	ENGR β	2/6/06		SIZE	MODEL NO.		DWG NO.	REV.	
MATERIAL CLASS P-1 MILD CARBON STEEL	MFG	-	-	C		115247	B		
FINISH LAKOS BLUE	WORK ORDER			SCALE	1:12	EST. WT.	0 lb	SHEET	1 OF 1

DWG NO. 115247 SHEET 1 REV. B