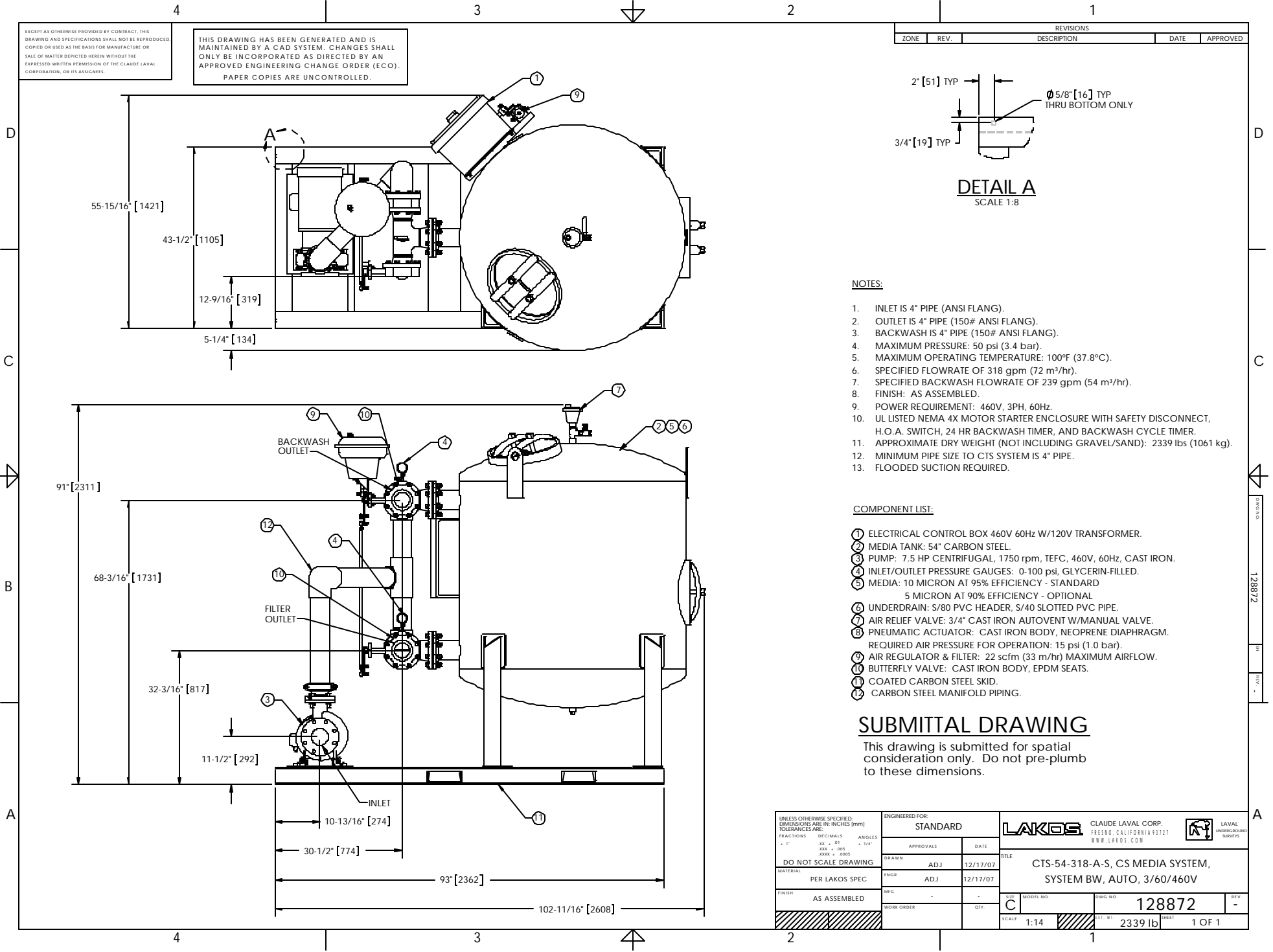


EXCEPT AS OTHERWISE PROVIDED BY CONTRACT, THIS DRAWING AND SPECIFICATIONS SHALL NOT BE REPRODUCED, COPIED OR BIDD AS THE BASIS FOR MANUFACTURE OR SALE OF MATTER SPECIFIED HEREIN WITHOUT THE EXPRESSED WRITTEN PERMISSION OF THE CLAUDE LAVAL CORPORATION, OR ITS ASSIGNEES.

THIS DRAWING HAS BEEN GENERATED AND IS MAINTAINED BY A CAD SYSTEM. CHANGES SHALL ONLY BE INCORPORATED AS DIRECTED BY AN APPROVED ENGINEERING CHANGE ORDER (ECO). PAPER COPIES ARE UNCONTROLLED.

REVISIONS				
ZONE	REV.	DESCRIPTION	DATE	APPROVED



**NOTES:**

1. INLET IS 4" PIPE (ANSI FLANG).
2. OUTLET IS 4" PIPE (150# ANSI FLANG).
3. BACKWASH IS 4" PIPE (150# ANSI FLANG).
4. MAXIMUM PRESSURE: 50 psi (3.4 bar).
5. MAXIMUM OPERATING TEMPERATURE: 100°F (37.8°C).
6. SPECIFIED FLOWRATE OF 318 gpm (72 m<sup>3</sup>/hr).
7. SPECIFIED BACKWASH FLOWRATE OF 239 gpm (54 m<sup>3</sup>/hr).
8. FINISH: AS ASSEMBLED.
9. POWER REQUIREMENT: 460V, 3PH, 60Hz.
10. UL LISTED NEMA 4X MOTOR STARTER ENCLOSURE WITH SAFETY DISCONNECT, H.O.A. SWITCH, 24 HR BACKWASH TIMER, AND BACKWASH CYCLE TIMER.
11. APPROXIMATE DRY WEIGHT (NOT INCLUDING GRAVEL/SAND): 2339 lbs (1061 kg).
12. MINIMUM PIPE SIZE TO CTS SYSTEM IS 4" PIPE.
13. FLOODED SUCTION REQUIRED.

**COMPONENT LIST:**

- 1 ELECTRICAL CONTROL BOX 460V 60Hz W/120V TRANSFORMER.
- 2 MEDIA TANK: 54" CARBON STEEL.
- 3 PUMP: 7.5 HP CENTRIFUGAL, 1750 rpm, TEFC, 460V, 60Hz, CAST IRON.
- 4 INLET/OUTLET PRESSURE GAUGES: 0-100 psi, GLYCERIN-FILLED.
- 5 MEDIA: 10 MICRON AT 95% EFFICIENCY - STANDARD  
5 MICRON AT 90% EFFICIENCY - OPTIONAL
- 6 UNDERDRAIN: S/80 PVC HEADER, S/40 SLOTTED PVC PIPE.
- 7 AIR RELIEF VALVE: 3/4" CAST IRON AUTOVENT W/MANUAL VALVE.
- 8 PNEUMATIC ACTUATOR: CAST IRON BODY, NEOPRENE DIAPHRAGM.  
REQUIRED AIR PRESSURE FOR OPERATION: 15 psi (1.0 bar).
- 9 AIR REGULATOR & FILTER: 22 scfm (33 m<sup>3</sup>/hr) MAXIMUM AIRFLOW.
- 10 BUTTERFLY VALVE: CAST IRON BODY, EPDM SEATS.
- 11 COATED CARBON STEEL SKID.
- 12 CARBON STEEL MANIFOLD PIPING.

**SUBMITTAL DRAWING**

This drawing is submitted for spatial consideration only. Do not pre-plumb to these dimensions.

UNLESS OTHERWISE SPECIFIED, DIMENSIONS ARE IN: INCHES (mm) TOLERANCES ARE: FRACTIONS DECIMALS ANGLES ± .1" .005 ± .01 ± .1° DO NOT SCALE DRAWING MATERIAL PER LAKOS SPEC FINISH AS ASSEMBLED	ENGINEERED FOR: <b>STANDARD</b>	CLAUDE LAVAL CORP. 12850, CALIFORNIA 91721 WWW.LAKOS.COM	LAVL UNDERGROUND SURVEYS
	APPROVALS		
	DRAWN ADJ	12/17/07	TITLE
	ENGR ADJ	12/17/07	CTS-54-318-A-S, CS MEDIA SYSTEM, SYSTEM BW, AUTO, 3/60/460V
	MFG		SCALE
	WORK ORDER	QTY	SHEET NO. <b>C</b> MODEL NO. DWG NO. <b>128872</b> REV. <b>-</b> SCALE 1:14 WT 2339 lb SHEET 1 OF 1