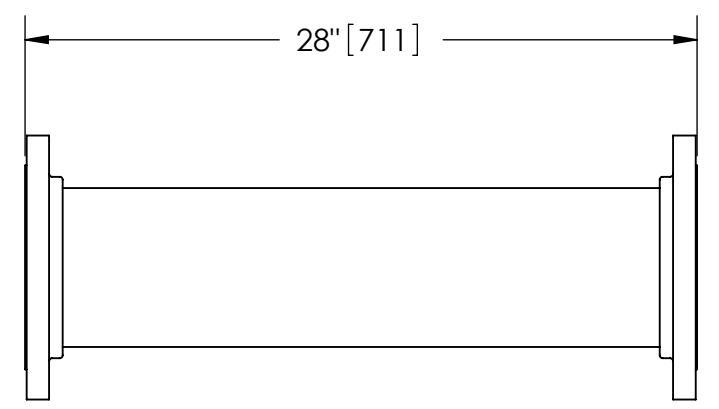
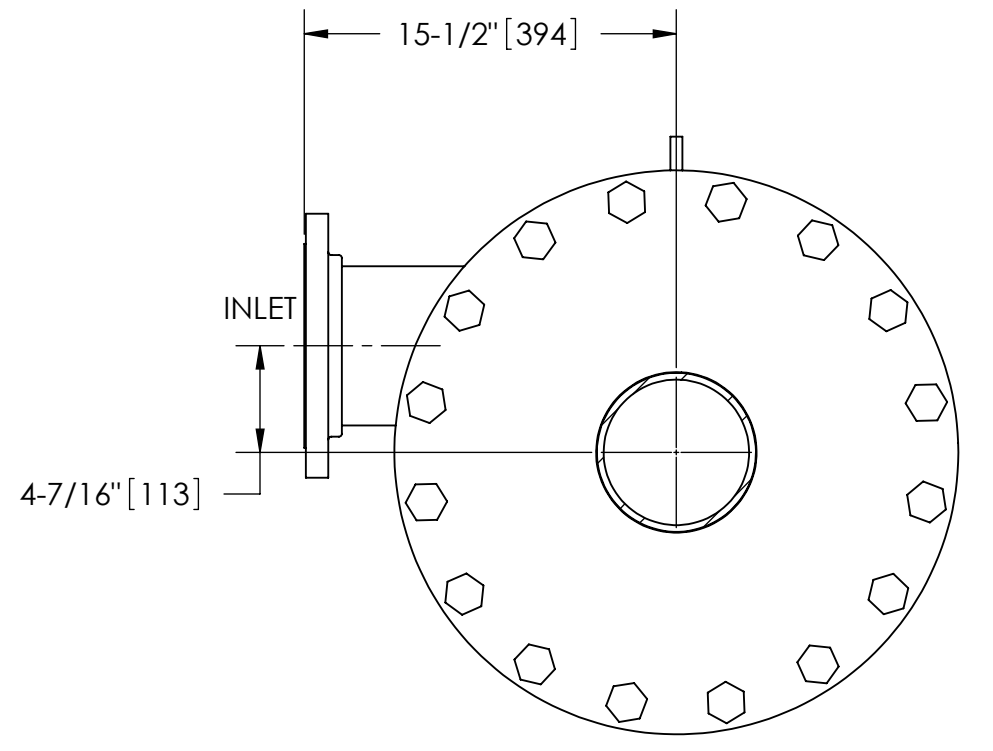
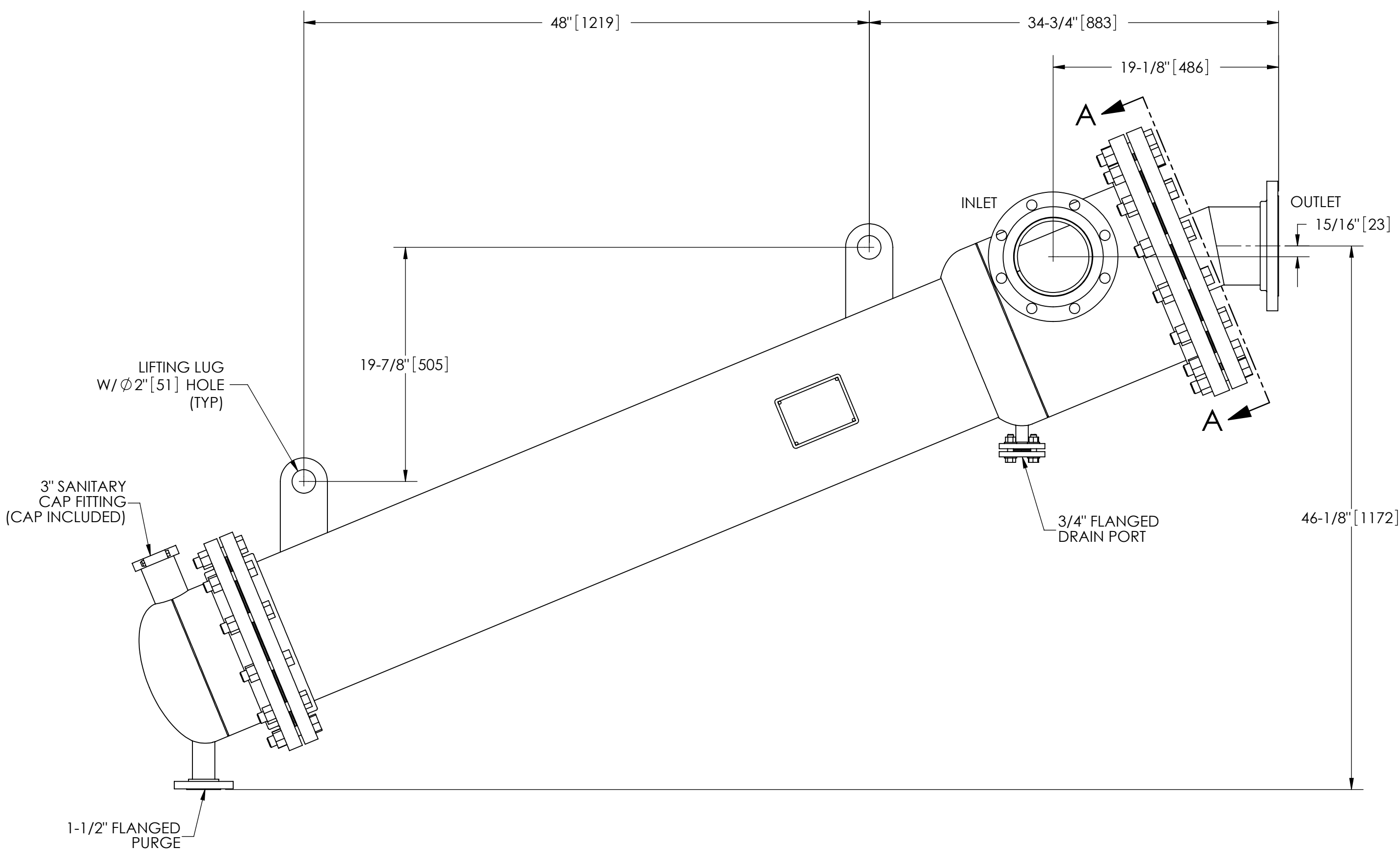


EXCEPT AS OTHERWISE PROVIDED BY CONTRACT, THIS DRAWING AND SPECIFICATIONS SHALL NOT BE REPRODUCED, COPIED OR USED AS THE BASIS FOR MANUFACTURE OR SALE OF MATTER DEPICTED HEREIN WITHOUT THE EXPRESSED WRITTEN PERMISSION OF THE CLAUDE LAVAL CORPORATION, OR ITS ASSIGNEES.

THIS DRAWING HAS BEEN GENERATED AND IS MAINTAINED BY A CAD SYSTEM. CHANGES SHALL ONLY BE INCORPORATED AS DIRECTED BY AN APPROVED ENGINEERING CHANGE ORDER (ECO). PAPER COPIES ARE UNCONTROLLED.

REVISIONS				
ZONE	REV.	DESCRIPTION	DATE	APPROVED

- NOTES:
1. INLET & OUTLET FLANGES ARE 6" 150# RF PER ANSI B16.5 REQUIRING 8X Ø3/4" BOLTS (BOLTS AND GASKETS NOT INCLUDED).
 2. MAXIMUM PRESSURE: 100 psi (6.9 bar).
 3. MAXIMUM TEMPERATURE: 400°F (204°C).
 4. PRESSURE LOSS: 3-12 psi (.2-.8 bar) AT RATED FLOW.
 5. RATED FLOW: 815-1500 gpm (185-341 m³/hr).
 6. APPROXIMATE DRY WEIGHT: 949 lbs (430 kg).
 7. FINISH: GLASS BLAST (EXTERIOR ONLY).
 8. GASKETS: SPIRAL WOUND, 304 SS W/PTFE FILLER.
 9. INLET & OUTLET PRESSURE GAUGE PORTS TO BE SUPPLIED ON CONNECTING PIPING BY END USER (CARBON STEEL ONLY).



FLANGED SPOOL
MODEL FS-06/S4 (AVAILABLE SEPARATELY)
REQUIRED FOR REMOVAL OF TOP ASSEMBLY

SUBMITTAL DRAWING
This drawing is submitted for spatial consideration only. Do not pre-plumb to these dimensions.

UNLESS OTHERWISE SPECIFIED: DIMENSIONS ARE IN: INCHES [mm] TOLERANCES ARE: FRACTIONS DECIMALS ANGLES ± 1" .XX ± .01 ± 1/4° .XXX ± .005 .XXXX ± .0005		ENGINEERED FOR: 304L SS		CLAUDE LAVAL CORP. FRESNO, CALIFORNIA 93727 WWW.LAKOS.COM		LAVAL UNDERGROUND SURVEYS	
DO NOT SCALE DRAWING		APPROVALS	DATE	TITLE			
MATERIAL TYPE 304L STAINLESS STEEL		DRAWN DLW	1/16/07	CSX-0815-HL/S4, SEPARATOR, 815-1500 gpm, 304L SS			
FINISH GLASS BLAST		ENGR JBI	9/15/11	SIZE C	MODEL NO.	DWG NO. 118194	REV. B
		WORK ORDER	QTY.	SCALE 1:8	EST. WT. 952 lb	SHEET 1 OF 1	

D
C
B
A

D
C
B
A

4 3 2 1

4 3 2 1

4 3 2 1

4 3 2 1

DWG NO. 118194
SHEET 1
REV. B