

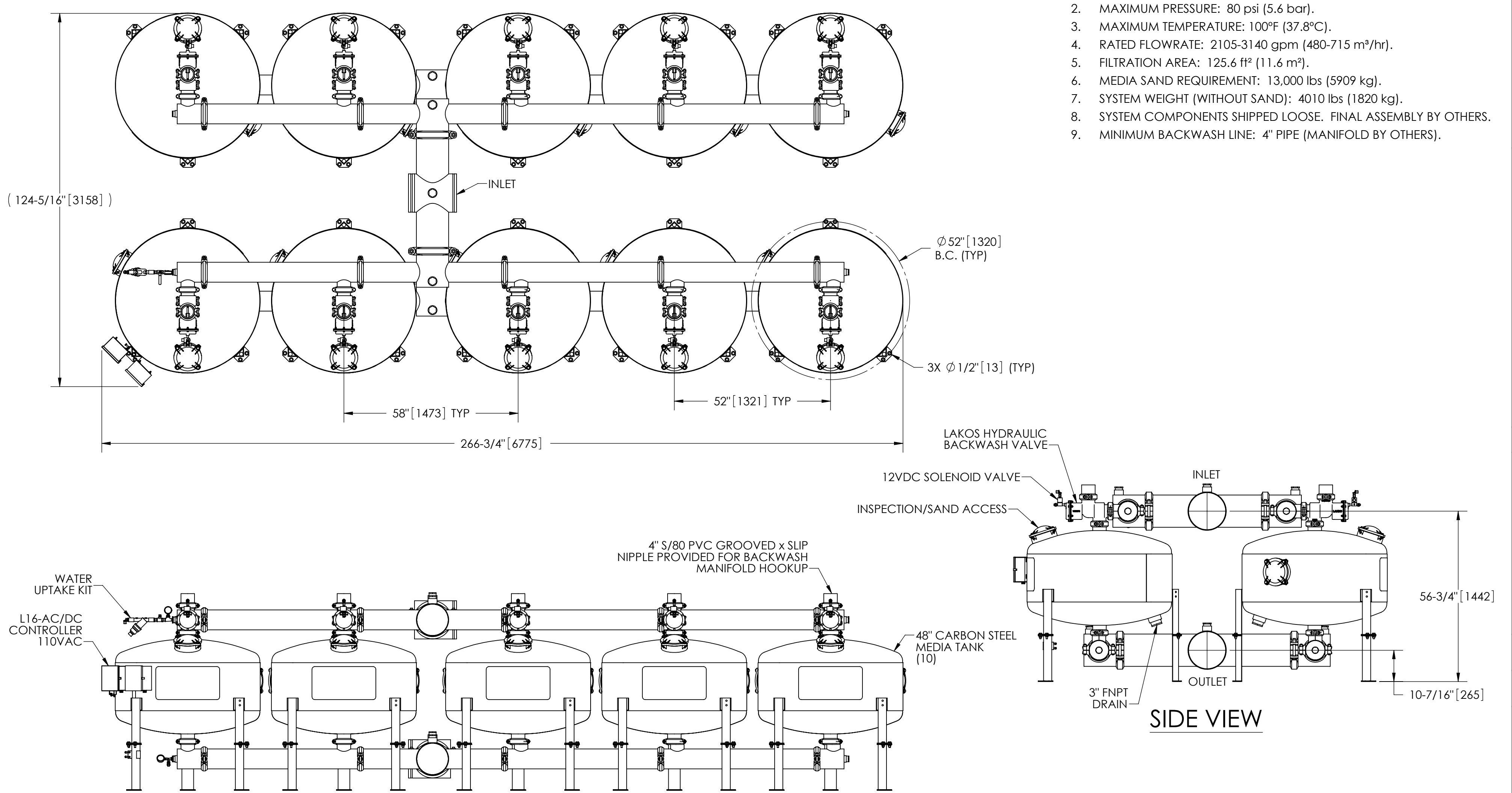
EXCEPT AS OTHERWISE PROVIDED BY CONTRACT, THIS DRAWING AND SPECIFICATIONS SHALL NOT BE REPRODUCED, COPIED OR USED AS THE BASIS FOR MANUFACTURE OR SALE OF MATTER DEPICTED HEREIN WITHOUT THE EXPRESSED WRITTEN PERMISSION OF THE CLAUDE LAVAL CORPORATION, OR ITS ASSIGNEES.

THIS DRAWING HAS BEEN GENERATED AND IS MAINTAINED BY A CAD SYSTEM. CHANGES SHALL ONLY BE INCORPORATED AS DIRECTED BY AN APPROVED ENGINEERING CHANGE ORDER (ECO). PAPER COPIES ARE UNCONTROLLED.

REVISION HISTORY				
ZONE	REV	DESCRIPTION	DATE	APPROVED

NOTES:

1. INLET & OUTLET ARE 12" GROOVED PIPE.
2. MAXIMUM PRESSURE: 80 psi (5.6 bar).
3. MAXIMUM TEMPERATURE: 100°F (37.8°C).
4. RATED FLOWRATE: 2105-3140 gpm (480-715 m³/hr).
5. FILTRATION AREA: 125.6 ft² (11.6 m²).
6. MEDIA SAND REQUIREMENT: 13,000 lbs (5909 kg).
7. SYSTEM WEIGHT (WITHOUT SAND): 4010 lbs (1820 kg).
8. SYSTEM COMPONENTS SHIPPED LOOSE. FINAL ASSEMBLY BY OTHERS.
9. MINIMUM BACKWASH LINE: 4" PIPE (MANIFOLD BY OTHERS).



SUBMITTAL DRAWING

This drawing is submitted for spatial consideration only. Do not pre-plumb to these dimensions.

UNLESS OTHERWISE SPECIFIED: DIMENSIONS ARE IN: INCHES [mm] TOLERANCES ARE: FRACTIONS DECIMALS ANGLES ± 1" .XX ± .01 ± 1/4" .XXX ± .005 .XXXX ± .0005		ENGINEERED FOR: STANDARD		CLAUDE LAVAL CORP. FRESNO, CALIFORNIA 93727 WWW.LAKOS.COM		LAVAL UNDERGROUND SURVEYS	
DO NOT SCALE DRAWING		APPROVALS	DATE	TITLE PROII-4812-10-A/H, SYSTEM XX248" 10 TANK MEDIA, AUTO "H" FEED			
MATERIAL PER LAKOS SPEC	ENGR -	JBI	12/5/12	SIZE C	MODEL NO.	DWG NO. PROII-4812-10A/H 01	REV. 01
FINISH AS ASSEMBLED	MFG -	WORK ORDER	QTY.	SCALE 1:24	EST. WT.	SHEET 1 OF 1	

DWG. NO. XXX SHEET 1 REV. 01